

Commitment to Excellence



Welcome to KIST



Principal's Message



Dear Everyone

It delights me to welcome all of you to KIST, a most reliable and greatly sought-after institution well-known for academic and professional excellence.

This reputed College – comprising +2s, Bachelor's, and Master's at one place – trusts in planning, and achieving, the uppermost benchmarks of formal education. Markedly, outstanding results over the years prove our worth. KIST graduates invariably get top placements alongside scholarships, and its alumni always do exceptionally worldwide. Ours is a choice you will treasure as you do well in your educational life ahead!

KIST is much more than just a place to learn and get fine qualifications; it gives students unrivaled guidance along with great chances so as to help them become responsible citizens. Our unique support system nurtures overall growth through plentiful opportunities in ECAs, CCAs, or outreach activities. Your experiences here would assuredly enrich your lives!

The College has an ideal teaching-learning environment supported by a perfect staff and an extraordinary faculty focusing on conceptual understanding and course content requirements. We forever strive to transform our students into superlative doers who're passionate about scholastic competence, lifetime learning, and personal development. It's no wonder that KIST graduates obtain remarkable placements, especially in MBBS and Engineering.

Now, we look forward to interacting with prospective students, parents, and guardians for the continuing success of this leading institution which is always open to new ideas.

Welcome again to your +2 College!

Best wishes

Yours sincerely

Samir Sharma
Principal

Introduction

Esteemed for its governing ethos – academic achievement for professional perfection – KIST is a special college. What makes it unique is its stimulating, transformative blend of intellectuality, seriousness, and goal-orientation just within one student community and one campus.

Established in 1995, KIST – Kathmandu Institute of Science & Technology – has a rich 27-year-long history. The College runs excellent +2 programmes in Science as well as Management and also offers Bachelor's and Master's. An educational pioneer, this institution has helped to shape the qualitative delivery of higher-level education in Nepal.

The distinctive appeal of the College is that once students join Grade XI here, they always become fully committed to their educational and professional future. Our top-class faculty members are extremely

dedicated, and our academic focus contributes to scholastic output. Over the last four years, because of increasingly effective management and student endeavour, our results have been most commendable.

The College has its own well-engineered, safe buildings with sufficient amenities boosting academic effectiveness. KIST campus is spacious enough for wide-ranging games & sports as well as co-curricular & extracurricular activities. The institution also has special clubs that serve the interests of students and to encourage our youngsters to serve society through useful action.

KIST, in fact, is where you'll be able to refine your purpose in academic life and define the profession or career you wish to embark upon thereafter. Our commitment, alongside excellent inputs and focused guidance, to help you to achieve your professional quest and life-goals is absolute. We believe in making a real difference by making you all unbeatable winners!



+ 2 Programmes at KIST

Gaining Relevant Qualifications



KIST offers outstanding +2 programmes in Science and Management. In particular, the College provides exceptional +2 teaching alongside all-round educational and other opportunities to its bright and talented students.

+2 Programme

The +2 programme in Nepal is the standard path to further studies for post-SEE / Equivalent level students. This academic programme builds a thorough educational base for higher studies in renowned colleges and universities globally. It assuredly leads to promising careers in engineering, health & medical science, or management.

For more information visit www.neb.gov.np

Subject-Group Combinations

Our +2 programmes have distinct subject-group combinations for Science and Management. Students have choices within these combinations.

Science

| GRADE XI | GRADE XII |
|------------------------------------|------------------------------------|
| A. Compulsory Subjects | A. Compulsory Subjects |
| English | English |
| Nepali | Nepali |
| Mathematics | Mathematics |
| B. Optional Subjects | B. Optional Subjects |
| Physics | Physics |
| Chemistry | Chemistry |
| Computer Science <i>or</i> Biology | Computer Science <i>or</i> Biology |

Management

| GRADE XI | GRADE XII |
|---|---|
| A. Compulsory Subjects | A. Compulsory Subjects |
| Nepali | Nepali |
| English | English |
| Social Studies & Life Skill Education <i>or</i> Mathematics | Social Studies & Life Skill Education <i>or</i> Mathematics |
| B. Optional Subjects | B. Optional Subjects |
| Accounting | Accounting |
| Economics | Economics |
| Computer Science <i>or</i> Business Mathematics <i>or</i> Hotel Management <i>or</i> Business Studies | Computer Science <i>or</i> Business Mathematics <i>or</i> Hotel Management <i>or</i> Business Studies |



Get Scholarships

Supporting Your Education

The College offers over 250 useful & varied scholarships annually. Life-changers, these scholarships help to spot and sponsor academic excellence alongside other exceptional personal performance: They make studying here a great idea! Undoubtedly, a KIST Scholarship will give you a distinct advantage in your educational & professional life.



A Merit Scholarships

1. Based on SEE Marks/Grades

| Type | Particulars | Science | Management |
|------|---|---------------------------|---------------------------|
| 1.1 | Merit Award I Full Scholarships | 20 seats Min. GPA 3.9 | 10 seats Min. GPA 3.85 |
| 1.2 | Merit Award II 100% Tuition fee waiver | 20 seats Min. GPA 3.85 | 10 seats Min. GPA 3.8 |
| 1.3 | Merit Award III 75% Tuition fee waiver | 20 seats Min. GPA 3.8 | 10 seats Min. GPA 3.75 |
| 1.4 | Merit Award IV 50% Tuition fee waiver | 20 seats Min. GPA 3.7 | 10 seats Min. GPA 3.6 |
| 1.5 | Merit Award V 25% Tuition fee waiver | 20 seats Min. GPA 3.6 | 10 seats Min. GPA 3.5 |
| 1.6 | Merit Award VI 10% Tuition fee waiver | 20 seats Min. GPA 3.5 | 20 seats Min. GPA 3.4 |

2. Based on KIST Entrance Tests

| Type | Particulars | Science | Management |
|------|--|----------|------------|
| 2.1 | Entrance Award I Full Scholarships | 6 seats | 4 seats |
| 2.2 | Entrance Award II 100% Tuition fee waiver | 6 seats | 4 seats |
| 2.3 | Entrance Award III 50% Tuition fee waiver | 10 seats | 8 seats |
| 2.4 | Entrance Award IV 25% Tuition Fee Waiver | 10 seats | 8 seats |

3. Based on Term Results

| Type | Particulars | Science | Management |
|------|---|---------------|---------------|
| 3.1 | Merit Award 100% Tuition fee waiver | Min. GPA 3.68 | Min. GPA 3.68 |
| 3.2 | Achievement Award 50% Tuition fee waiver | Min. GPA 3.52 | Min. GPA 3.52 |
| 3.3 | Scholastic Award 25% Tuition fee waiver | Min. GPA 3.36 | Min. GPA 3.36 |

B Talent & Need-Based Scholarships

| Type | Particulars | Seats | Description |
|------|--|-------|--|
| 1 | Science Award | 2 | For meaningful, original inventiveness |
| 2 | Arts Award | 2 | For well-known or creative presentation |
| 3 | Sports Award | 2 | For noticeable accomplishments or rare abilities |
| 4 | Social Equity Scholarships 50% Tuition fee waiver | 10 | To empower the physically, socially, or geographically disadvantaged |

Infrastructure & Campus

Safe Environment & Central Location

College Buildings

KIST has built its own purposeful spacious academic buildings with abundant amenities. Our construction is structurally sound and made with a view to run this popular educational institution effectively. There is enough space for wide-ranging activities and large classrooms for flexible learning environments. The College also has a roomy library, seminar halls, faculty and administrative offices for plentiful study opportunities or requirements.

The Premises

The College grounds are fairly large and contain sports facilities like basketball, badminton, and table tennis. They are used for multifarious college events or other important outdoor purposes. Our premises are wide, open, clean and fresh with pleasing flowers and greenery.

Safe Environment

The setting of KIST is secure and peaceful in every way. The physical infrastructure has been assembled strictly according to governmental guidelines keeping in view, among other technicalities, natural hazards. All our buildings that accommodate several key facilities are well maintained and regularly inspected by engineers for functionality and safety. As a result, our environment is most conducive to all activities concerning the academic accomplishment and overall development of our students.

Ideal Location

KIST is well situated in a serene and lush spot in central Kathmandu. This makes our city campus easily accessible and saves students' time, money, and energy while commuting shorter distances to and fro their classes or games here. We offer an ideally located, model campus with modern classrooms and quiet study areas to all our current or prospective students.





High-quality Education

Pursuing Academic Excellence

Excellent Faculty

Our dedicated and experienced faculty delivers excellent teaching-learning. Tutors supervise academic performance, interact with students, and give needed guidance. In order to maintain and upgrade its benchmarks, KIST supports ongoing professional development and training of its teachers.

Effective Methodology

KIST teaching methodology is unique. Teachers use flexible, multiple learning styles to help students increase understanding and remember information. Our pedagogic methods integrate technology that fosters a desire to learn and helps students to acquire critical thinking skills.

Systematic Assignments

We give students regular homework co-related to methodical classwork and complete course coverage. Systematic vacation homework and ample preparatory work for Board Examinations are mandatory. KIST Student Planners help in a planned and output-oriented approach to student academic effort.

Close Monitoring

Our proficient faculty watchfully monitors academic progress. Teachers impart both group and personalized instruction of the highest quality. KIST insists on meticulous checking of lesson assignments, daily or special homework, and collegiate attendance – both punctuality and regularity.

Regular Exams

KIST's academic life is power-driven by tests and examinations. We take regular class tests, Term and Pre-Board exams. The examination system of the College is well structured and surely enhances the competitive success of our students.

Continuous Assessment

Our term-wise evaluation is based on student performance in Term examinations and additional assessment of class tests, assignments, and attendance. We also evaluate students appropriately with reference to their co-curricular and extracurricular activities. KIST teachers give performance feedback that is the basis of vital academic support.

Sufficient Practicals

The College arranges sufficient practicals to meet syllabi standards and students' hands-on learning needs. These lab classes and experimentation greatly help students to become familiar with science, technology, and management in real or applied situations. KIST instructors and technical staff provide close support to students so as to transform their theoretical learning into handy concrete know-how.

Learn Deeper

Utilizing Study Opportunities

Tutorial System

KIST's well-designed tutorial system truly improves the academic performance of its students over the year. This is a unique scholastic opportunity at the College for students to get individual attention and indispensable support to learn better.

Regular Tutorials

The College provides regular tutorials during college hours as an integral part of its formal teaching plan consisting of lectures, tutorials and practicals. Interactive, task-based, and specific, our tutorial classes address the possible lack of full understanding and needed clarity of students in certain subjects or particular topic-areas. KIST tutors impart study & exam tips and also give revision follow-ups.

Additional Tutorials

KIST organizes extra tutorials on Saturdays, during the week, and over the vacations throughout the academic session. These intensive tutorial classes are arranged on the basis of an attending student's academic level or proficiency, need, or request. We emphasize small-sized classes that provide individual care and precise guidance.

Preparation Courses

Our distinctive synergistic teaching-learning approach has made KIST preparation courses vital for students. They give an extra edge to our students for succeeding in both their regular course-based and competitive examinations.

Competitive Preparation

KIST's competitive preparation classes for medical, engineering and management entrance tests are held throughout the year. They prepare students during their yearlong studies for doing well simultaneously in Board exams and later in key entrance tests essential for their higher studies. Such thorough coaching also largely assists them to obtain scholarships after +2.

Refresher Classes

The College provides refresher classes after completing the main course. These inputs encapsulate a quick penetrating review of the entire course and provide a solid tutoring session for subsequent NEB Board Examinations. Such classes give KIST students a superb chance to consult subject teachers about hard topics or difficult questions and to clear their doubts.

Counseling Services

KIST offers essential counseling services that are available to its students at all times. We recognize the importance of supporting the positive growth of each individual studying here. The College concentrates upon areas relevant to their ongoing academics, future study or career plans, and personal or social needs and wants.

Academic & Personal

KIST academic counseling for students is based on their subject-wise performance. This counseling facilitates the acquisition of study skills and habits along with time management techniques that together help in eradicating their weak spots. Additionally, personal counseling at the College aims at maintaining the highest standards of conduct and discipline to prepare each student for an exemplary college life.

Higher Studies & Careers

The College counselors advise students about choosing the right courses and suitable colleges or universities for higher studies. KIST counseling also extends to institutional search and applying for placements or scholarships. We suggest educational and career choices based on available opportunities globally carefully considering students' preferences.





Cutting-Edge Facilities

Benefitting from Resources

Library

The College library has a large updated collection of internationally standardized textbooks, reference or general reading books, and e-gadgetry. We subscribe regularly to first-rate newspapers, magazines, and journals so that our students have access to the latest authentic information. We have set up an e-library for helping students access latest study materials.

Laboratories

KIST has well-equipped, commodious, hygienic laboratories for Physics, Chemistry, and Biology. The labs have modern apparatus and ample, varied materials or specimens to disseminate in-depth practical competence. Our technical staff provides full support to students.

Canteen

The College has a canteen for students and employees in its premises. At KIST, the food and beverage including free drinking water quality is checked carefully. We ensure that all food items are fresh, clean, nutritious, chemical- and pest-free, and as affordable as feasible.

ICT Centre

KIST has a digitally networked working environment with a centrally located ICT – Information Communication Technology – Centre with continuous Internet connectivity. The College also has state-of-the-art computer labs to encourage e-learning and enhance computer skills so necessary in the contemporary knowledge socio-economy.

Transportation

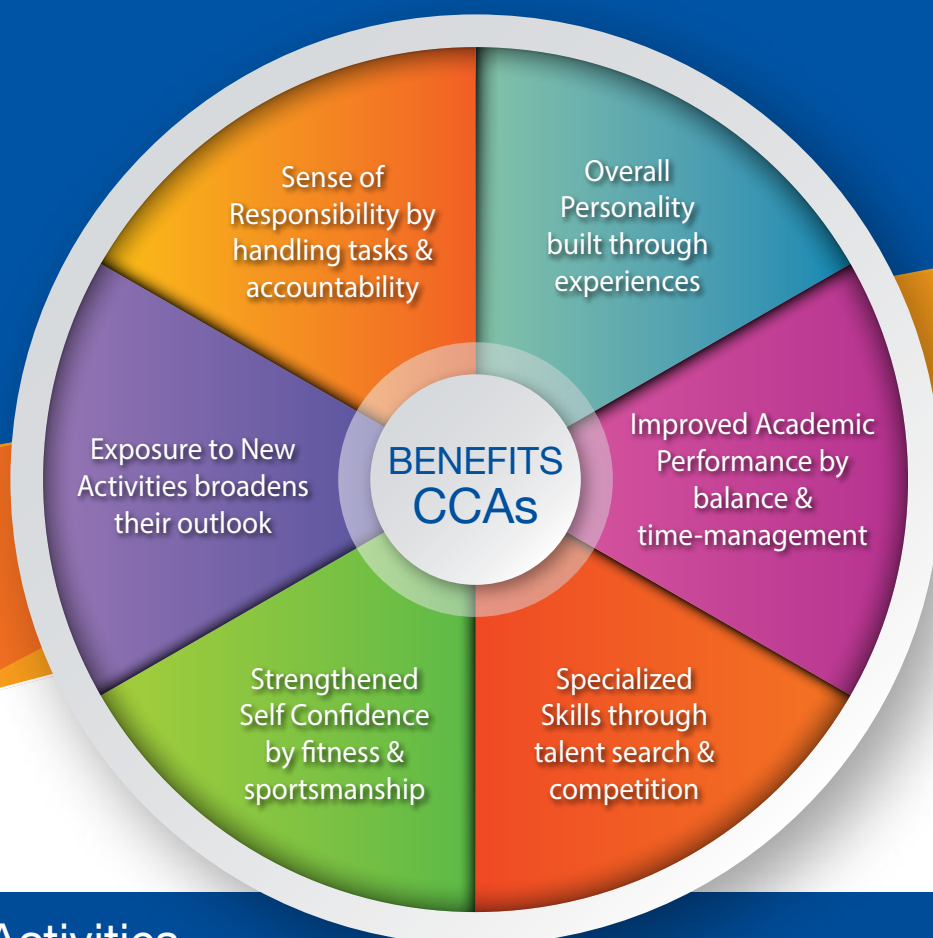
KIST transportation services, to and fro the College within Kathmandu valley, are dependable, punctual, comfortable, and reasonably priced. Our bus stops for student commuters are clearly laid out and the timings are set as per our bus schedules.

Hostels

The College has efficiently managed hostels that are secure, decent, clean, and quiet places ideal for the educational journey of KIST boarders while they study here. There are separate hostels for boys and girls in different areas within a short walking distance from the College. They are scrupulously supervised while all efforts are made to provide a homely touch with a comfortable, pleasant ambience.

Be Involved

Life Beyond the Classroom



Co-Curricular Activities

Co-curricular activities for you here are a required, and dynamic, bridge between your academic accomplishment and extracurricular activities. They boost social interaction, leadership, healthy recreation, self-confidence & self-discipline. The intellectuality, personality, and academic worth of a scholar are shaped by them.

CCAs here certainly enrich students' lives by opening their minds, and developing their personalities and academic profiles through productive engagement and a balance approach to their lives. The College has varied co-curricular activities that galvanize our youngsters to do even better and stay ahead.

Clearly, these activities lead to higher academic results & stronger relationships. Participants tend to lead healthier & more active lifestyles. They foster a sense of belonging to the institution resulting in a happy & cohesive community of learners who are doers well prepared for the outside world.

Seminars & Workshops

The College organizes frequent seminars and workshops to inform students about higher education and related careers. These occasions are about specific subject areas and have an interactive environment for students to learn from experts and orientate themselves.

Publications

We regularly publish magazines and newsletters containing thought-provoking articles by experts that help to professionalize our students and foster managerial skills. In particular, KIST Newsletter furthers our collective initiative towards innovative growth while KIST Outlook is all about the institutional ethos, actions, and changes.

Contests & Fairs

KIST organizes numerous contests to stimulate intellectual or artistic pursuits. These include art & craft shows, debates, elocution, quiz contests, and recitation. Notably, we also organize a popular annual Fair that has a Science, IT & Management Exhibition, with imaginative projects of students, and related Competitions. This inter-college event promotes a vitally-needed inter-disciplinary approach to knowledge and assists in innovation or discovery linked to societal and national needs.

Clubs

KIST Sci-&-Tech Club

Computer & IT Society

Sports Club

Creative & Performing Arts Society

Literary Club of KIST

Youth Red Cross Circle

KIST Alumni Association

KIST Social Service Club

Extracurricular Activities



We believe ECAs play a rather meaningful role in a student's education and life. Curricular activities – mere studies – remain incomplete without vital extracurricular inputs since they help in the all-round development of students.

KIST's extracurricular activities are indeed a vibrant side of its campus life making its students fit in body, mind, and spirit. Different kinds of ECAs are conducted throughout the year at KIST so that the students can tap and display their talents.

We actively encourage student participation in ECAs for other important reasons too. ECA records are carefully considered by admission officers in colleges or universities for student placements including scholarships & later by potential employers for job selection.

Clubs

KIST clubs delight and energize our hard working students and provide them a full college experience through healthy psychological outlets. We have many stimulating clubs for the students' diverse areas of interest like science and technology, management, or art and literature.

Social Service

KIST motivates its youngsters to serve society in as many ways as they possibly can. Many of our students volunteer for blood donation, public health awareness, sanitation programs, traffic safety and natural calamity relief.

Games & Sports

We emphasize this aspect of college life as it builds a competitive spirit & positively impacts students' overall development. Activities related to games & sports are a permanent fixture of the KIST daily schedule.



Be a Part of Our Tradition

Collaborating with Friends



Academic Excellence KIST believes in a culture of excellence promoting outstanding academic achievement. The College strives for continuous scholastic improvement by narrowing the gap between aims and attainments. Our well-managed and peaceful campus environment is most favourable to real learning and keeps our students fully focused on their studies.

Positive Discipline Our Code of Conduct instills a high level of positive discipline in our students. The College builds up a keen sense of task completion and time management among students. The work, discipline, and conduct of KIST students reap rich rewards and endear them to society.

Enriching Events The College celebrates its campus life through annual events that unite and energize its students and alumni. Welcome and Orientation programmes, Award and Graduation ceremonies, and the Career Guidance Symposium add depth and texture to the KIST experience. Students make lasting friendships and enrich their thinking.

Parental Participation We hold that parental supervision is necessary to foster educational development and student success. Close cooperation between the College and parents or guardians – meetings or consultations – brings about ideational harmony and behavioral consistency. So families themselves become educators through the milieu they provide at home.

Alumni Engagement KIST has an Alumni Association to encourage fruitful, on-going interaction between past and present students. Such continued engagement builds up a web of mutually beneficial relationships and affects a free exchange of useful ideas or fresh information thereby greatly profiting all our students and their *alma mater*. Additionally, the Association aspires to support the institutional quest for academic achievement and all-round excellence.

Motivating Awards KIST Merit Scholarships motivate students to excel in their performance in the Term and Board Examinations. The College also awards talent-based scholarships in fields beyond academics and need-based scholarships to help deserving disadvantaged students. Our awards stimulate the overall academic milieu of the institution and nurture higher overall achievement.

Interactive Platform KIST's community of teachers and students discusses subject matters, projects, and activities across a wide network of relationships. The College also maintains close relationships with national & international universities and related bodies for stimulating intellectual enquiry. Representatives from various institutions provide useful information about educational and career prospects or career-related issues.



Dear Students

We're delighted to welcome you to KIST – the nation's premier student-centred college! Our College has an excellent environment fostering academic accomplishment. KIST's where exceptional teaching-learning's the unchangeable rule. Our annual results, Board or University, prove this scholastic legacy. Significantly, KIST alumni are doing commendably well in Nepal and abroad.

Our well-regarded institution offers wonderful opportunities for personal development & future success. We encourage participation in many extracurricular, co-curricular & club activities. This nurtures intellectuality, awareness, knowledge & skills. We keenly support your career & life goals. Choosing where to study post-SEE is a challenging task unless you find the right institution. KIST is ideal for your +2s. It's also a great place for Bachelor's & Master's. Looking forward to meeting you as KISTians!

Deepak Khadka, Head, Admissions & Student Services



Indeed, we are an institution committed to excellence since our very establishment. Our experienced, energetic, and hardworking specially-selected faculty members have created, literally, out of raw students, successful, indispensable human resources in the vital fields of medicine, engineering, and biotechnology. It's with these goals in mind that we all at this esteemed institution hope to ignite young minds and shape fine futures. In today's result-conscious, demanding globalized world, we assure all of you that we shall carry on our glorious legacy of doing better and better every day for the betterment of the wonderful KIST family.

Tribendra Timsina
Coordinator, +2 Science



KIST firmly believes quality is never an accident... It's because of intelligent, combined effort in the right direction: We integrate student talent through myriad opportunities in academic, co-curricular, and extracurricular activities. This enables them to challenge themselves, celebrate their creativity, and innovate through daily interaction. We empower students to become productive, compassionate members of an ever-changing global society. So our students aim to be good in every way. We emphasize the lasting value of sharing and understanding for the pursuit of holistic excellence. That's why parents have great faith in us. This is our driving force!

Basanta Blown
Assistant Coordinator, +2 Management

Realize Your Potential

Get Top Results

An education at KIST will certainly help you reach your full academic potential and get top results.

Student satisfaction and awareness is our key to notable academic accomplishment. All the academic focus at the College contributes to solid and continuous scholastic output. Our youngsters realize that tomorrow's real wealth is knowledge reinforced by academic accomplishment today.

It is a well-known fact that the academic results of KIST students in Board Examinations are among the best anywhere. Happily, there is a clear rise in our levels of attainment.

We have strong reasons to believe that this unstoppable trend of academic achievement shall not only continue but also improve!

Advisory Board

Prof Dr Upendra K Koirala
Former Vice-Chancellor, Mid-West University

Prof Dr Sashidhar Ram Joshi
Dean, IOE, Pulchowk, TU

Prof Dr Bharat Raj Pahari
Former Dean, IOE, Pulchowk, TU

Prof Dr Ananda Shova Tamrakar
Tribhuvan University

Prof Dr Tulsi Pathak
Tribhuvan University

Prof Dr William Patrick Arnott
University of Nevada Reno, USA

Dr James C Bernard
Pacific Northwest National Laboratory, USA

Faculty & Staff

Making a Difference



Faculty



Accountancy

Basanta Blown
Kamal Aryal

Biology

Amber Bahadur Thapa
Prakash Man Rajbansi
Rup Bahadur Shah
Shova Shrestha

Business Studies

Keshav Prasad Aryal
Suraj Air

Chemistry

Prof Amala Shrestha
Lokendra B Bamma
Rajib Poudel
Ranabir Bohara
Resham Lal Shrestha
Shisir Khanal
Subash Berma

Computer Science

Nabin Adhikari
Sanjay Dhungana

Economics

Gautam Bilas Joshi
Mukunda Dahal

English

Anup Adhikari
Mukunda Raj Kandel
Rajiv Niroula

Hotel Management

Nikesh Bista

Mathematics

Chandramani Bhattarai
Hira Bhandari
Mohan Singh Karki
Pradip Bagale
Raphi Bhandari

Nepali

Khimananda Gyawali
Ram Prasad Gyawali
Yadav Bhattarai

Physics

Birendra Yadav
Deepak Nepal
Hari Sharan Regmi
Kamal Prasad Sharma
Santosh Kumar Poudel
Shyam Sundar Tiwari
Tribendra Timsina

Social Studies & Life Skill Education

Mukunda Dahal
Sanjay Dhungana

Staff

Abani Tandukar
Balaram Thapa
Basulal Deula
Basundhara Chhetri
Bhagwati Khatri
Bijay Thapa
Bishnu Raya
Bishwash Chaudhari
Chandan Deula
Chandra B Gurung
Giriraj Pokhrel
Govinda Aryal
Indu Shrestha

Khindra Kafle
Kush Sunder Shrestha
Mukesh Chandra
Narayan Budhathoki
Narayan Mangrati
Naresh K Sunuwar
Navaraj Lamichhane
Nil Prasad Subedi
Parmila Rai
Pradeep Khadka
Pramod Thapa
Rabina Shakya
Raj Kumar Khadka

Ravi Khadka
Sangita Dhakal
Santosh Neupane
Santoshi Bist
Shisam Shrestha
Somnath Aryal
Subash Chandra Panday
Subash Tharu
Sunita Shrestha
Suraj Air
Surya B Thapa
Umesh Karmacharya



The College empowered me with commendable academic qualifications while playing an immense role in insightful self-discovery and strong character-building. Unforgettable, indeed, are irreplaceable memories, enlightening experiences, friendly interaction, and teachers' encouragement throughout. KIST's role is life-changing due to its solid support and career guidance.



Manoj Sapkota
BE Civil, IOE Pulchowk Campus

KIST gave me an encouraging environment for studying seriously, focusing on its superlative academics, and developing my personality. This College consistently motivates students to set high yet realistic goals in their lives. The KIST Family deserves my immense gratitude for what all it did.



Manish Mudvari
BE Mechanical, IOE Pulchowk Campus

Studying at KIST, post-SEE, is a great opportunity for sincere scholars. They award scholarships to deserving students, and provide the best possible learning environment. The well-managed College has the teaching expertise which played a crucial role in transforming me into a first-rate medical student.



Basanta Bhusal
MBBS, BPKIHS Dharan

KIST inspires students to achieve their dreams through its excellent approach to learning. If you are a success-seeker, trying to build a strong educational foundation, it offers the best college environment. Wholeheartedly, I'd thank the College for becoming the mainstay of my scholastic accomplishment.



Yagya Chapain
MBBS, NAIHS

My two-year stay at KIST proved to be splendid, and nostalgic . . . Clearly, surrounded by an efficacious learning atmosphere, I bloomed here under the guidance of sensitive yet practical teachers who stimulate our curiosity. Bliss and tranquillity describe this extraordinary institution's approach to +2 instruction.



Sujan Lamichhane
BSc Ag, AFU Rampur Campus

There are some temples of learning, where educators are like parents to us and where progress is striking. This college happens to be one. In my case, I got a mere B+ in SLC, moved up to an A in Grade XII, and finally cracked the BPKIHS entrance examination: Honestly, all because of KIST.



Sahil Niraula
MBBS, BPKIHS Dharan

I believe that a reputed institution nurtures fine scholastic qualities. My dreams, hopes, and expectations which were, astonishingly, all fulfilled at KIST. Here, I was given opportunities of all sorts to enhance my life experience and prepare for my dream career.



Sadmarg Thakur
MBBS, IOM TUTH, Maharajgunj Campus

The dilemma facing post-SEE students is where to do +2 . . . Luckily, I found KIST which provides an exemplary academic environment with exceptional, innovative teachers, a well-maintained library, and modern labs, all within sound surroundings. KIST taught me the value of discipline, achievement, and excellence.



Aadarsha Chaudhari
Science Batch 2078

KIST has a dynamic atmosphere galvanized by dedicated, energetic faculty members. The management and educators unswervingly believe in channeling students' talents and energies to bring out the best in them. Its array of academic facilities is impressive, and it prioritizes combining learning with creativity.



Sindu Thapa
Management Batch 2078

KIST's a centre for tapping student talent . . . It offers a medical-cum-engineering-oriented teaching-learning environment. Lucky to do +2 Bio-Science here, I was totally prepared by the College to crack the Common Entrance Examination (CEE) with a full scholarship in my first attempt!



Sujan Sunar
MBBS, IOM TUTH, Maharajgunj Campus

Join Us

Shaping Your Future!

Eligibility

Applicants need at least GPA 2.6 or Equivalent Grades in SEE / Equivalent level exams for enrolment in Science & at least GPA 2.4 or Equivalent Grades in SEE / Equivalent level exams for enrolment in Management. Applicants must fulfill the NEB's subject-specific grade requirements.

Application Forms

Application forms are available at the KIST office and also online at www.kist.edu.np. Applicants should submit these forms duly filled in with all supporting documents by the given deadline.

Entrance Test

Getting through this Test is mandatory for your admission. The Entrance Test appropriately assesses the examinee in areas related to the choice of course – Science or Management. We provide Sample Test Papers online to the student applicants in order to prepare themselves for this competitive entry exam.

Results

The results of the Entrance Test are strictly based on the order of merit. The names of the selected student applicants are posted on the College website: www.kist.edu.np and also pasted on the College Notice Board.

Interview

Student applicants who have cleared the Entrance Test are individually interviewed thereafter either in-person or online according to their convenience. The date and time of each interview is mentioned in the Entrance Test Results sheet. It should be kept in mind by the applicants that they need to be accompanied by their parents/guardians during their interview. Applicants must bring all the required documents or email scanned copies of the same.

Offer of Admission & Acceptance

Selected applicants are handed Offer Letters for admission with or without offers of Scholarships at the end of their interviews. They need to submit their acceptance within the stipulated period to get admitted.

Enrollment

Once the College receives a letter of acceptance from the applicant, it will confirm admission forthwith subject to the payment of fees. Successful applicants shall be enrolled as bona fide KIST students on the completion of this process!



Enrichment Activities

More Than Just Studying

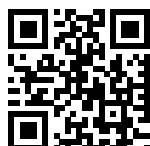
Studying at KIST is to have motivating experiences, to be actively engaged, and to pursue what interests you through the numerous opportunities we provide. Promoting health and self-confidence, such activities lead to wider achievements – including good grades – that are highly valued by universities the world over.







KIST
COLLEGE & SS



PO Box 20828, Kamalpokhari, Kathmandu, Nepal
Tel: 4534990, 4534178, Email: info@kist.edu.np

www.kist.edu.np